

NOVEMBER 2021

Monthly Newsletter



A Message from Administration

We hope your children enjoyed their fall lessons, pumpkin themed activities and classroom celebrations last month. Seeing our students enjoy their Halloween costumes and fall attire is one of the highlights of the year for us. Thank you for allowing us to be part of these special occasions! This month we are focusing on gratitude and connecting with others. We have many special activities planned for our students and are looking forward to sharing photos with you all on Links 2 Home. As always, please let us know if you have any questions or concerns.



Locker Refresh

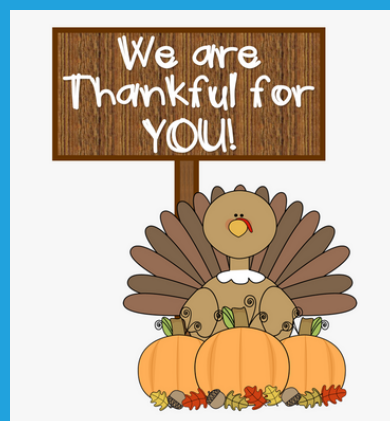
It's starting to get cooler and we are planning extra outdoor time to take full advantage of the fall season. Please make sure your child has a weather appropriate change of clothes in their locker and outerwear when applicable.

UPCOMING EVENTS

PRE-K2 CONFERENCES
TUES. NOVEMBER 9TH
WED. NOVEMBER 10TH

DROP-IN DAYS
WED. NOVEMBER 24TH
MON. NOVEMBER 29TH

ECKC CLOSED
THUR. NOVEMBER 25TH
FRIDAY, NOVEMBER 26TH





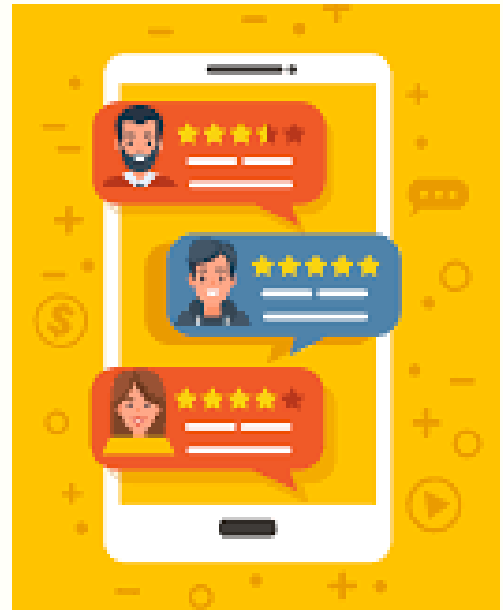
SMG Survey

Parent surveys are available now through November 19th. Make sure to check your email for a message from SMG Research.

By completing the survey and sending a screenshot of the completed screen to kalee.teeter@enchantedcare.com, you will be entered to win a free drop-in day. The winner will be announced Monday, November 22nd.

Love Our School? Review Us!

In today's connected world, many families turn to online reviews to learn more about the reputation of schools. Just a reminder that you can find our school on Facebook, Google, Yelp and other online directories. We'd love more families like yours, so please consider spreading the word about our school.



Enchanted Care[®]
Learning Center • Kids Campus

7376 Gooding Blvd. Bldg. 2 | Delaware, OH 43016 | 740-548-8116

Kalee Teeter | kalee.teeter@enchantedcare.com